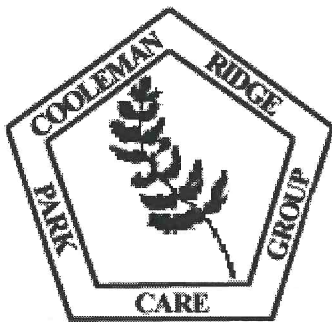


HCSR
919
435
2006

[114324]



COOLEMAN RIDGE PARK CARE GROUP

Newsletter June 2005

Previous Sunday meeting, May 15th

Lots of our members had over-riding commitments on this particular Sunday so it's not surprising that numbers were low. When Doug came panting up, having just made it back from Sydney, people had already dispersed to check on the mistletoe population as well as on the general state of weed growth along the Ridge. So he assessed the state of the old dam - read his report below. ✨

Future programme

Provisionally 2005 looks like this, rotating through the three Group Areas (GA) when there is no special programme:

- June 19th GAS/Arawang weeding, plant ID
- July 17th Lichen Walk with Prof. Elix GAS/Arawang
- August 21st GA weeding, fuel assessment, plant ID
- Sep 18th Brendan Lepski Plant Walk
- Oct 16th ? AGM
- Nov 20th GA weeding, fuel assessment, plant ID
- Dec 18th GA weeding, fuel assessment, plant ID ✨

Next Sunday meeting, June 19th

- June 19th GAS/Arawang, weeding, plant ID
- 1.30 - 4 pm
- meet on Namatjira Drive just before the Kambah Pool Road turn-off, or GAS/Arawang
- bring hat, gloves, weeder, drink, snack, raincoat if it is wet ✨

M is for missing you

- A is for Angela
- B is for beaming
- C is for caring
- D is for doing
- E is enthusiasm.....

It would take several alphabets to list all Angela's graces, so we simply wish her

All the Best at Cotter. ✨

Pauline Lyngå, 6288 7009, gosta@webone.com.au June 2005
Web site URL: <http://coolemanridge.inventivedingo.com>

The Old Dam

Come the third weekend in the month (or thereabouts) and it's time to do the CAMPFIRE check of the old dam. All those vital statistics taken from sites throughout the ACT in an attempt to gauge the effects of the 2003 fire on waterways and to assess recovery.

Well, we have over two years of data from the old dam on the Ridge. But the May 2005 data collection was somewhat truncated. There was no water in the dam!

Viewed positively, wetlands should dry out every now and then. On the other hand, the dam is scarcely a naturally occurring wetland - and I've never seen it waterless before, unlike the leaky Kathner Street dam. Two mid-size mud-encrusted turtles were observed (the first sighting of such creatures for some time).

With it laid bare, the shallowness of the site is surprising - little more than an indentation with built-up banks. It is a measure of our big dry that something I've not seen empty is now in that state. Makes you wonder what the effect on our rivers will be.
Doug ✨

May log

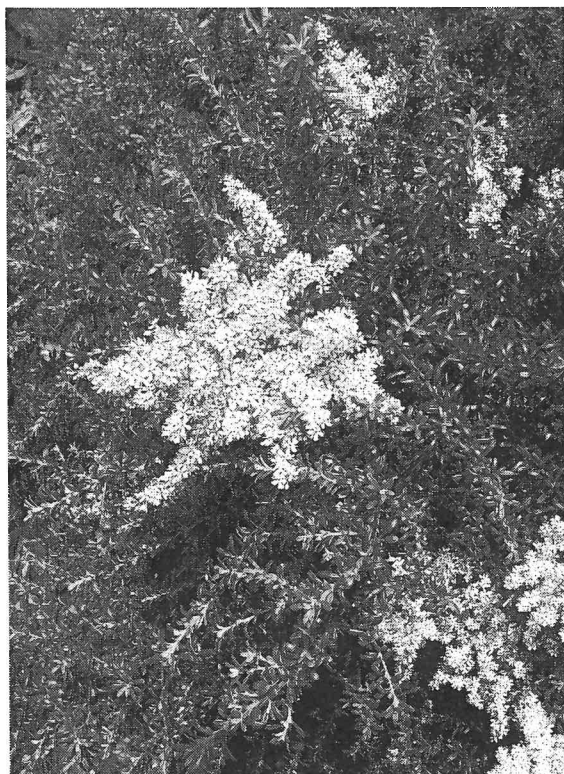
- 110505 black shouldered kite pair teaching young to hover - up from Monkman St
- 150505 old dam dry ✨

World Environment Day

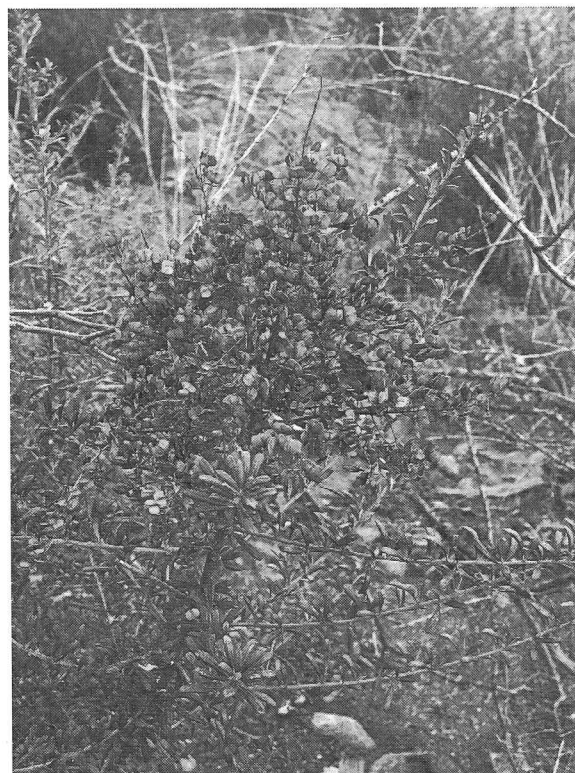
At 10 am on Sunday 5th four of us were at Kathner St to conduct the public round the first section of the trail and then through the northern caretaker areas. Virginia had photocopied our picture sheet of native plants to be found in the area as well as a sheet of commonly encountered weeds. These were appreciated and we have more copies for future events, as well as to place on the noticeboard. Our walk took us by the watering trough and we saw the areas that have been pegged out for the grazing, wick wiping and slashing trials. ✨

What's around

Family: PITTOSPORACEAE *pitta* Gr: pitch, *spora* Gr: seed



Bursaria lasiophylla
Native Blackthorn
Shrub to 2.5 m
bursa L: purse, *lasios* Gr: woolly, *phyllon* Gr: leaf
as seen flowering in January



Bursaria lasiophylla
Native Blackthorn
Shrub to 2.5 m
bursa L: purse, *lasios* Gr: woolly, *phyllon* Gr: leaf
seeds seen in March ✨

Chapman School

*Rattling leaves from the old burnt trees,
Rocky paths from the orange ground,
Lots of grass which feels bumpy,
Cosy beds for lots of animals,
Views to see, what a wonderful sight.*

*Buzzing bees around the trees,
Kangaroo grass which feels rough,
Cooleman Ridge is the place to go
On a hot sunny day.
Cooleman Ridge is special to me
Because it is native and fun to go up.*

*Lauren
Class 2GM*

The children's enthusiasm is boundless – they've been sketching Kangaroo grass; they can identify *Verbascum*, and chop it out to add to their growing pile. They can even spell it.

Jenny and Doug tell of small people coming up to them and confiding *I love coming up here!* ✨

Equipment

Doug's application was successful in obtaining funding under the Volunteer Small Equipment Grants 2005 (administered by the Department of Family and Community Services) for a new brushcutter, 2 weed wakka attachments plus gardening gloves and picks. All up we have \$1275 to spend. ✨

Pauline Lyngå, 6288 7009, gosta@webone.com.au June 2005
Web site URL: <http://coolemanridge.inventivedingo.com>

Are you still out there?

Unless we see you or hear from you we don't know. Policy is to assume interest for two years following the last contact – after which names are dropped from the membership list.

Please complete and return the enclosed/attached survey form to Doug - at the very least checking the box to say you'd like to keep getting the newsletter.

Doug - phone 6288 8589
snail mail: 65 Ballarat Street, FISHER ACT 2611
e-mail tinneydoug@hotmail.com ✨

Exotic grass reduction trials

Some of us met CNP staff, on 11th May, by the water trough above Monkman St to once again discuss the trials. We were pleased to meet our new coordinator, Virginia Logan, who now has the combined Land Care/Park Care Coordinator position, as well as Kate McNeill from East District/South, and Weeds Officer Geoff Price. And it was a chance to say *Good Bye* to Angela.

We appreciated the patient and sympathetic hearing our concerns received, as well as the attempt to reach agreement with our Group. However the fact remains that we do not agree to the return of cattle to the Ridge. ✨

Where's our notice board?

Coming soon! ✨